



## The Presbytery of San José NEWSLETTER

News of Presbyterians in San Benito, Santa Clara,  
Santa Cruz and Monterey Counties

Vol. 24, No. 5  
November, 2004

### CALENDAR

Presbytery meeting  
Saturday, Dec. 4  
at **Immanuel  
Presbyterian  
Church**  
3675 Payne Ave,  
San José 9 am-1 pm  
Contact them at:  
408-244-5298

### ***New voices on the Presbytery phone***



After years of service to the Presbytery as Program Support Staff, Jim Tennyson retired on October 4, 2004. Tennyson worked in the Presbytery office four years, and before that he served as Hunger Action Advocate (formerly HAE).

"It was time to move on," Jim said. He and wife Elaine are moving to Peteluma or Santa Rosa.

Pat Plant will perform Jim's tasks, including the newsletter. Her husband Greg has volunteered to update the Presbytery web site and help answer phones.

Pat will remain as part-time Hunger Action Advocate.

To contact her call 408-279-0220 or email [pat@sanjoseby.org](mailto:pat@sanjoseby.org).

## **Older Adult Presbyterians Task Force Starts**

Rev. Nancy Schell and Judy Lococo have spearheaded the San José Presbytery's new emphasis on ministry with and to older adults, represented by the Presbytery Older Adult Ministry Task Force (POAM).

"The Presbytery sent Judy and me to a national Presbyterian Older Adult Ministry (POAM) a year ago," Rev. Schell explained. "We saw this network of people involved in Older Adult ministries as important to our survival because the church and the entire country are getting gray – the fastest-growing segment in America is over 85!"

Church representatives interested in this ministry met for two informational lunches last winter. Westminster, San José 1<sup>st</sup>, and Saratoga Presbyterian Churches sponsor the resulting task force.


"Our purpose is to minister to Older Adult issues -- housing, health, physical needs, geriatric legalities – and to make Older Adult activities part of church ministries," Rev. Schell said. "We need their wisdom, and Older Adults often have time to share."

She said the local POAM's goals include to develop a library; sponsor speakers on Older Adult issues at Presbytery churches; hold a major local event for church members, their families and the community at large during Older Adult Week next May; and to have an Advocate for Older Adults in each and every congregation.

Rev. Schell quoted Kathleen Fisher, author of *Winter Grace*: "As we grow older, our bodies slow down but our spiritual lives speed up."

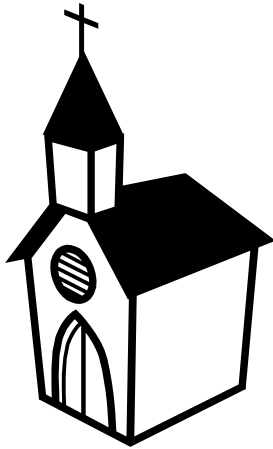


### ***Feeding hungry — this holiday and all year***

 With the Thanksgiving and Christmas holidays rapidly approaching, many people think about donating food and or money to the programs that serve poor people locally. An article in the *San José Mercury News* (Oct.13, 2004) stated that the shelves are nearly empty in many of the local food pantries from increased need and decreased donations. Whether your church does regular food drives, donates money from your Mission funds, organizes work parties of volunteers, or encourages individuals to volunteer and contribute on their own, the time is **NOW** to be particularly helpful to these programs. Remember, too, that people are hungry not just at Thanksgiving and Christmas but all year long. The food banks within our Presbytery are good destinations for donated food and financial contributions: Second Harvest Food Bank of San Mateo, Santa Clara, Santa Cruz and San Benito Counties and the Monterey County Food Bank.

Contact Pat Plant, Hunger Action Advocate, at 737-7370 or email her at [patplant@comcast.net](mailto:patplant@comcast.net) for more detailed information about how to be even more helpful to hungry people locally.

# COM Continues Triennial Look at Presbytery's Churches: Foothill, Mountain View, Santa Cruz, Stone Are "Commended"



Committee on Ministry is completing its triennial visits for 2004. The committee visits a third of the churches in this presbytery each year. As these are carried out, we plan to report some of the interesting ministries in which the churches in our Presbytery are involved. Here are some highlights from recent visits:

Foothill Church celebrated their 60th anniversary and are about to pay off their mortgage. Their music program reaches out to the community in a series of high-quality music concerts. They have a community garden and are an official "Green" business as designated by the city of San Jose.

Mountain View is excited about their new after-church lunch program that brings the Body of Christ together in fellowship on the first Sunday of each month. They have a new vision statement that they will present this month to the congregation for acceptance. A Van Program brings folks who need trans-

portation to worship. After a number of difficult years, they are beginning to heal and move into a new era of ministry.

Santa Cruz First has a coffeehouse one Friday a month where there is music and food and an "open microphone" for skits and songs. This attracts younger people. All committees meet on the first Tuesday of each month, which they like because it brings the family of God together and creates the feeling that being present is important. They have a Wednesday-night education time from 5-9 p.m., which includes singing, study, and dinner.

Stone Church is undergoing extensive upgrade to the building, after its financial campaign exceeded projections. The high school program has grown out of a Spiritual Formation program that made a strong commitment to youth. Stone has a Taize service once a month.

All the churches are dedicated to their services of worship and proud of the worship of God which they offer. We commend all our churches for their dedication to God and for making Christ visible to their communities. Thanks be to God for each of our congregations!

---

## FROM THE MODERATOR: "We Are the Church"

Avery and Marsh have it right in their hymn "*We Are the Church*:"

The church is not a building  
The church is not a steeple,  
The church is not a resting place,  
The church is people!

I am the church!  
You are the church!  
All who follow Jesus, all around the world!  
Yes, we're the church together.\*



As your Moderator, I have had the pleasure of visiting 21 of our congregations so far this year, mainly for worship and special celebrations. Presbyterians honor their diversity, and while I have experienced some of that, I have mainly experienced how we are the same ... the great people that comprise our congregations! They are warm, friendly, and active in their respective churches and in their communities. That's where Avery and Marsh are right: the people are the church and the church at its best. Thanks be to God.

Blessings and Peace to you all,

*Claudia Hamm*

\* Copyright 1972 by Richard K, Avery and Donald S. Marsh, ASCAP

## **It's a Matter of Faith: How the Presbyterian Foundation Can Help You and Your Church**

You've given to the Church through your years of service. Now you can make a future gift to the Church or its mission while **you** receive lifetime payments.

A charitable gift annuity through the Presbyterian Foundation provides you with an opportunity to continue support for your favorite Church or mission of the Church beyond your lifetime! With a charitable gift annuity, you or someone you love will receive fixed payments for a lifetime. In fact, many individuals use this opportunity to supplement their retirement income. The annuity payments will never vary and are determined by the age of the donor when the gift is created. The remainder can establish a permanent endowment fund with the Foundation to support the Presbyterian congregation, school, seminary, or mission of your choice.

In addition to providing future support for the Church or mission you hold dear, you may also qualify for valuable tax benefits. What a special way to express your Christian stewardship!

If you would like to receive a confidential, non-obligatory illustration of the potential benefits to you, the Church, and potential tax deductions a charitable gift annuity can provide, please write or call me at the address or phone numbers listed below.

In choosing to plan your giving, the Presbyterian Foundation can assist you in reaching your stewardship goals.

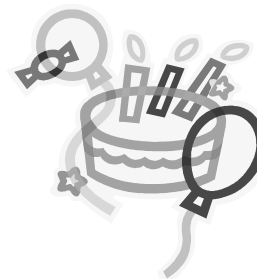
Rev. Skip Herbert, Development Officer  
9985 Folsom Blvd.  
Sacramento, CA 95827-1405  
(916) 366-1934  
(888) 233-0060 Toll-Free  
[geh@fdn.pcusa.org](mailto:geh@fdn.pcusa.org)

## **ANNIVERSARY CELEBRATION!**

Santa Teresa Foothills  
Presbyterian Church,  
5370 Snell Ave, San  
José, will celebrate their  
**25th Anniversary** on  
Sunday, December 5th.

408-629-5906

<http://www.sthpc.org>



---

## **Rev. Stella Joins Westminster**



Westminster Presbyterian Church (San José) installed the Rev. Stella Matusiewicz as Designated Associate Pastor for Hispanic Ministries in a service ceremony on September 25, 2004.

Pastor Steve Norman said, "Much of the success of this ministry has been due to the leadership of Stella. We created

the half-time ordained position to fully use Rev. Matusiewicz's ministry gifts at Westminster."

Rev. Stella said in her statement of faith that "for me as a woman, it was not easy to be a pastor. God spoke to me as I read Joel 2:28-29, and for me this meant that for God there are no second class citizens! God calls both women and men to be ministers! Through this Scripture, God gave me power to continue the ministry."

Her duties include outreach to Spanish-speaking people, with pastoral care and Spanish worship; planning and coordinating bi-lingual church events; and moderating monthly Latin America Fellowship Leadership Committee meetings.

Rev. Matusiewicz is married to Mike Matusiewicz, bilingual and a public-school teacher, and a long-time member of Westminster.

---

## ***Epiphany Tea Jan. 9 Seeks Visions ". . . in Light of Christ"***



Presbyterian Women of the San José Presbytery begin 2005 with music and inspiration at Gilroy Presbyterian Church on Sunday, January 9, 2005, from 2 to 4 p.m. with an epiphany tea featuring music by soprano Mary Linduska, seasonal readings, and fellowship. The title is "Seeking Visions — Dreaming Dreams ... in the Light of Christ." Call Claudia Hamm at 408-356-6665 by Jan. 6 to reserve your place!

## Presbytery of San José

888 N. First St. Suite 320  
San José CA 95112  
Office: 408 279 0220  
Fax: 408 279 5261  
Toll Free: 877 537 5100  
[www.sanjosepby.org](http://www.sanjosepby.org)

### Jane Odell

Interim Executive Presbyter

### Joey Lee

Associate Executive,  
Presbyter for Program

### John Lococo

Stated Clerk

### Beverly Raynes

Administrative Assistant  
to the Executive Presbyter

### Pat Plant

Program Support Staff

### Diane Case

Staff Accountant

### Bill Palmer

Refugee Ministry Coordinator  
(408) 395-0916

### Pat Plant

Hunger Action Advocate  
(408) 737-7370

### Dorothy & Don Metzger

Mission Advocates  
(408) 356-1216

### Lynn Viale

Evangelism Consultant  
(408) 848-2724

The Presbytery newsletter is published 5 times each year for the 44 Presbyterian churches located in this four-county area.

### Quotable Quote:

"Whatever you did for one of the least of these brothers of mine, you did for me..."  
— Matthew 25:40

*From the Interim Executive ...*

## ... A Different Quality of Time

I am writing this article just after Halloween, before Thanksgiving and (hopefully) you will read it during Advent. This is the season of **Hallow-Thanks-Mas** (a phrase coined by L.



G r e g o r y Jones, Dean of Duke Divinity School). I say hopefully because the newsletter deadline was two weeks ago and my

inability to get my article in on time is what was holding it up.

I really have an excuse for my tardiness – we moved into a new house in early October; my husband, Steve, spent 10 days in the hospital last month; and we had a house guest last weekend. So, you see, I've had no time to write.

I'm wanting days with more hours, weeks with more days, and months with more weeks. What a seductive trap that is – and it wouldn't help at all. Dorothy Bass, in her book *Receiving The Day: Christian Practices for Opening the Gift of Time*, says:

What we really need is time of a different quality. We need the kind of time that is measured in a yearly round of feasts and fasts, in a life span that begins when a newborn is placed in her parents' arms, and in a day that ends and begins anew as a line of darkness creeps across the edge of the earth. This kind of time exists, but we have learned not to notice it.

This Advent, let us notice this different quality of time. As we light Advent candles at church and home, as we read and savor the familiar beloved passages from Isaiah, Matthew, and Luke, as we wrap carefully chosen gifts, unpack the crèche and tree decorations which have so many memories, as we sing carols and feast and hold close those we love, as we prepare once again to welcome the Christ Child into our hearts and lives, let us be mindful of the preciousness of time.

Blessings,

*Jane*

## *It's Time to Think of Christmas Joy Offering*



The most joy-filled of the four annual Presbyterian offerings is upon us: the Christmas Joy offering.

The offering goes to active and retired workers of the church (through the Board of Pensions programs), and to eight racially ethnic schools and colleges supported by PC(USA) for student scholarships. Traditionally most congregations take the offering the Sunday before Christmas.

## OUR VISION

Called by God as a governing body of the Presbyterian Church (USA) the Presbytery of San José exists to serve and be a resource for the health and growth of the Presbyterian congregations within our four counties.

### Our Vision is:

- To support our congregations in reaching out to all people in the name of Jesus Christ;
- To challenge a diverse community to hold fast to the foundations of our faith;
- To build a diverse community unified by the unique gifts of the Holy Spirit for the great work of the